

Brochure may 2024

**CABLE HANDLING**



**CABLE PROTECTION**



**COILING MACHINES**



**AUTOMATIC CABLE REELS**



**WIRING - CABLE DRAW**



# CABLE HANDLING

## Cable drum unwinders



**LIGHT 120®**

**LIGHT 220®**

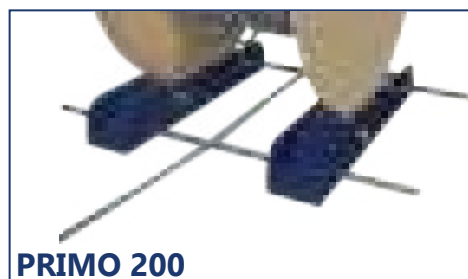
**LIGHT 320®**

### TECHNICAL SPECIFICATIONS

|                | Essential Feature                | Code                | Max weight (kg) | Cable Drums Ø (mm) | Max width (mm) | Weight (kg) |
|----------------|----------------------------------|---------------------|-----------------|--------------------|----------------|-------------|
| LIGHT 120®     | The most economical              | <i>EL120</i>        | 120             | 300 to 600         | 435            | 5,5         |
| BLUE SPEED 190 | For damaged drums                | <i>BS190</i>        | 190             | -                  | -              | 1,1         |
| PRIMO 200      | 2 shoes                          | <i>E3004200</i>     | 200             | 200 to 700         | 580            | 4,9         |
| COMPACT 200    | Transforms in just 3 clicks      | <i>EC200</i>        | 200             | 200 to 700         | 580            | 5,9         |
| OT200          | Classic unwinder                 | <i>EDR0200</i>      | 200             | 400 to 800         | 520            | 15          |
| LIGHT 220®     | The original                     | <i>EL220</i>        | 220             | 300 to 1 050       | 540            | 7,6         |
| ST1            | Unwinder trolley                 | <i>E3008010</i>     | 300             | 400 to 1 050       | 800            | 31          |
| LIGHT 320®     | Light «XL»                       | <i>EL320</i>        | 320             | 300 to 1 200       | 610            | 12,6        |
| BLUE SPEED 380 | For drums and cable coils        | <i>BS380</i>        | 380             | -                  | -              | 6,8         |
| ST2            | Unwinder trolley                 | <i>E3008020</i>     | 450             | 900 to 1 400       | 800            | 34          |
| BLUE SPEED 500 | For damaged drums                | <i>BS500</i>        | 500             | -                  | -              | 3,0         |
| OT800          | Classic unwinder                 | <i>EDR0800</i>      | 800             | 600 to 1 050       | 575            | 24          |
| 1T200          | Classic unwinder                 | <i>EDR1T200</i>     | 1 200           | 600 to 1 200       | 770            | 38          |
| POLY 1500      | Strong capacity and dismountable | <i>POLY1500</i>     | 1 500           | 500 to 1 400       | 950            | 28          |
| AXO 1600       | Worm drive jacks                 | <i>EAX016-18...</i> | 1 600           | 600 to 1 800       | 1 100          | 75          |
| POLY 2500      | Strong capacity and dismountable | <i>POLY2500</i>     | 2 500           | 500 to 1 650       | 950            | 38          |
| AXO 6 TONNES   | Hydraulic jacks                  | <i>EAX060-27R</i>   | 6 000           | 750 to 2 700       | 1 450          | 169         |
| 5 à 7 T        | Very large capacity              | <i>OBDR5070</i>     | 7 000           | 750 to 2 200       | 1 350          | 139         |
| 7 à 10 T       | Very large capacity              | <i>OBDR7010</i>     | 10 000          | 750 to 3 400       | -              | 246         |
| AXO 10 TONNES  | Hydraulic jacks                  | <i>EAX100-22...</i> | 10 000          | 400 to 2 200       | 1 350          | 148         |
|                |                                  | <i>EAX100-32...</i> | 10 000          | 400 to 3 200       | 1 900          | 176         |



**BLUE SPEED**



**PRIMO 200**



**COMPACT 200**

**UNWINDER CARRYING CASE**



**POLY 1500**

**POLY 2500**

### Unwinder with rollers



OT200 - OT800 - 1T200 - 5 à 7T - 7 à 10T

### Unwinder trolleys



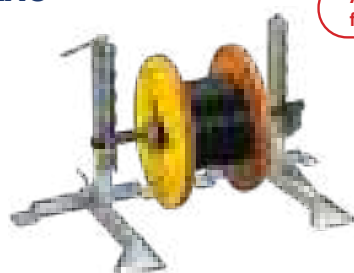
ST2

ST1

ST3

### AXO

Available for RENT



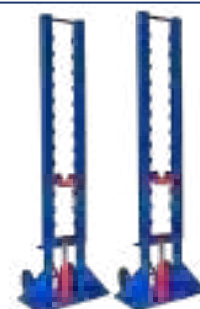
AXO 1,6T - Ø 16 00



AXO 6T - Ø 2700



AXO 10T - Ø 2200



AXO 10T - Ø 3200

# CABLE HANDLING

## Site coil holders

### QUAD range

#### NOVOQUAD



E3500900

#### QUAD®



E3500333

#### MINOQUAD



E3500300

#### UNIQUAD 300



E3500100

#### UNIQUAD 400



E3500104

### ESCABOCABLE



E3500660

### SATELLITE®



E3500750

### MINOCABLE



E3500510

## Storage

### PRIMO-STOCK



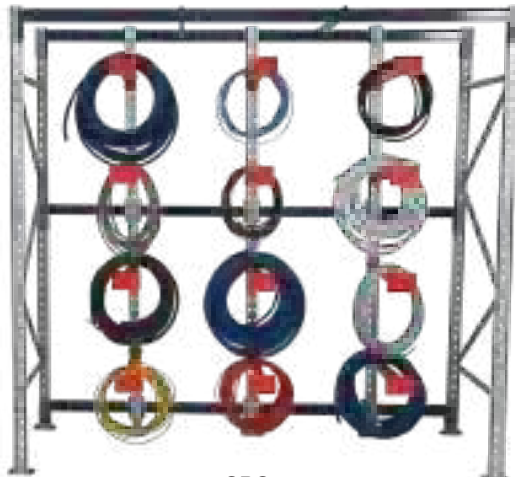
E3004200S  
+ E3400010

### BOBI®



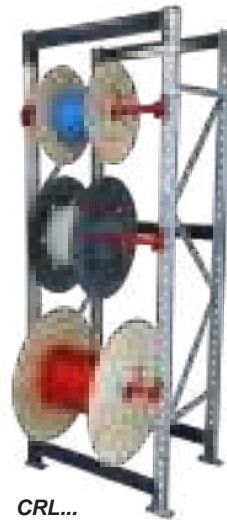
E3090...

### Cable display rack CABLERACK®



CRC...

### CABLERACK® light



CRL...

### Cable drum rack CABLERACK®



## Spool and cable drums

### Spools with straps



### Spool and cable drums



Indicate the material, the Ø of the flanges, the Ø of the drum, the effective width and the quantity

## Cable cutters

All cable cutters manual or with battery



New



Cable cutter head Ø 55mm adaptable on cordless screwdriver-drill BOSCH GSR 12V-35 FC FlexiClick

CC55B - CC55T

## Coilers with cranks



EM...



# CABLE HANDLING

## Measuring devices

M3



E3350004

Handle model  
M3-M



E3350010

M50



E3350521

Odometer



E3360...

M35



E3350354

CM3000



EVC3000

## Manual coiling

PKCO



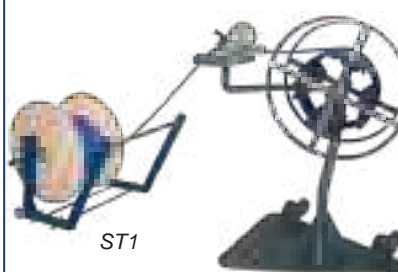
E3001...

PKDE



E3002...

SPIROCABLE



ST1

E3005...

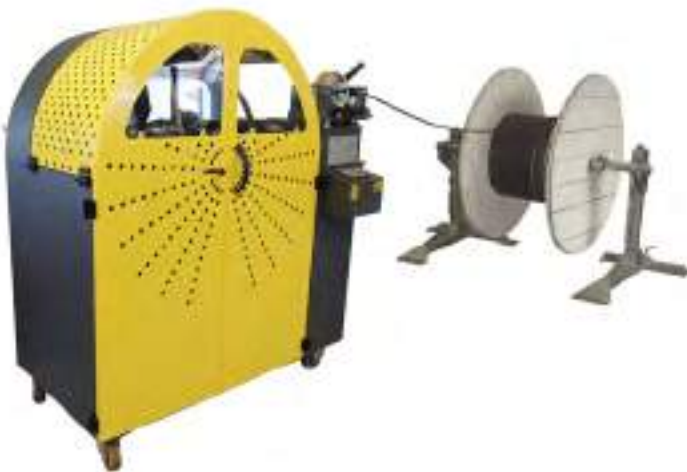
MANU-COCCI®



E3009...

## COILING MACHINES

MOTO-COCCI® (coiler)



ECO-COCCI (400 kg)



All machines until 10 tons



Length-wise



Maintenance - Security contract



# CABLE DRAW

## Pulling rods WALLY - length 30 meters

New

### WALLY BASIC

Unroll and roll up "by hand"  
Mixed guide head (also acting as an eyelet)

The most powerful  
Fiberglass Ø 3 mm

The unbreakable  
Polyester torsadé Ø 4 mm



Code WBASIC-FV330

Code WBASIC-P430

### WALLY EXPERT

Dynamic housing: unrolls and rolls up with a simple push  
"All-purpose" guide head

The most powerful  
Fiberglass Ø 3 mm

The unbreakable  
Polyester torsadé Ø 4 mm



Code WEXPERT-FV330

Code WEXPERT-P430

## Fiberglass pulling rods WALLY STICK

### WALLY STICK 4 mm

Code WSTICK04

### WALLY STICK 6 mm

Code WSTICK06



New



## SUNNY

New



Six ranges, length up to 500 meters :

| Range | Ø (mm) | Wheels | Finish      | Length (m) | Code   |
|-------|--------|--------|-------------|------------|--------|
| FV1   | 4,5    | No     | Epoxy paint | 30 to 60   | FV1... |
| FV2   | 6      |        |             | 60 to 100  | FV2... |
| FV3   | 9      | Yes    |             | 100 to 300 | FV3... |
|       | 11     |        |             | 150 to 300 |        |
| FV4   | 7,2    | No     | Galvanized  | 40 to 120  | FV4... |
| FV5   | 9      | Yes    |             | 40 to 150  | FV5... |
| FV6   | 11     |        |             | 120 to 500 | FV6... |

## Pulleys



Codes PL...

## Cable pulling grip

For cables of all diameters



Tertiary use - residential : codes CHT...  
VRD use : codes CHV...

## Cable drums trailers

14 models for drums until 5 tons  
and Ø 4,10 meters.

Codes S...



## Electric winches

3 models : pulling force  
500kN, 800kN or 2000kN.

Codes CAB...



# AUTOMATIC CABLE REELS

## The UNMISSABLE: electrical power supply reels

### 3G1,5<sup>2</sup>



| Model | Length | Cable type | IP | Bracket | Plugs  | Code             |
|-------|--------|------------|----|---------|--------|------------------|
| P105  | 6 m    | H05VV-F    | 42 | Swivel  | Option | ER03015-06V-P105 |
| P506  | 10 m   | H07RN-F    |    |         |        | ER03015-10R-P506 |
| P301  | 11 m   |            |    |         |        | ER03015-11R-P301 |
| P315  | 15 m   | H05VV-F    |    |         | Option | ER03015-15V-P315 |
| P421  | 22 m   | H07RN-F    |    |         | Yes    | ER03015-22R-P421 |
|       |        |            |    |         | Option |                  |



### 3G2,5<sup>2</sup> - IP42



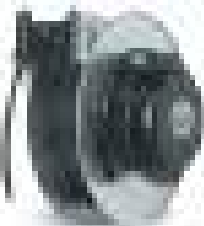
| Model | Length | Cable type | IP     | Bracket          | Plugs  | Code             |
|-------|--------|------------|--------|------------------|--------|------------------|
| A325  | 8 m    | H07RN-F    | 42     | Swivel           | Option | ER03025-08R-A325 |
| P325  | 10 m   |            |        |                  |        | ER03025-10R-P325 |
| P510  |        | H05VV-F    |        |                  |        | ER03025-10V-P510 |
| P302  | 10 m   | H07RN-F    |        |                  | Yes    | ER03025-10R-P302 |
| P805  | 12 m   | H07RN-F    |        |                  | Option | ER03025-12R-P805 |
| P412  | 17 m   |            |        |                  | Yes    | ER03025-17R-P412 |
| P806  | 19 m   |            | Option | ER03025-19R-P806 |        |                  |
| P422  | 20 m   |            | Yes    | ER03025-20R-P422 |        |                  |

| Model     | Length | Cable type | IP | Bracket | Plugs  | Code                  |
|-----------|--------|------------|----|---------|--------|-----------------------|
| A710/65   | 10 m   | H07RN-F    | 65 | Swivel  | Option | ER03025-10R-A710/65   |
| A715/65   | 15 m   |            |    |         |        | ER03025-15R-A715/65   |
| S503-F    | 20 m   |            |    | Fixed   |        | ER03025-20R-S503-F    |
|           |        |            |    |         |        | Swivel                |
| S8V02-F   | 31 m   |            |    | Fixed   |        | ER03025-31R-S8V02-F   |
| S8V02-FSR |        |            |    |         |        | ER03025-31R-S8V02-FSR |
| S8V02-P   |        |            |    | Swivel  |        | ER03025-31R-S8V02-P   |
| S8V02-PSR |        |            |    |         |        | ER03025-31R-S8V02-PSR |
| S8H05     | 41 m   |            |    | Option  |        | ER03025-41R-S8H05     |

### 3G2,5<sup>2</sup> - IP65



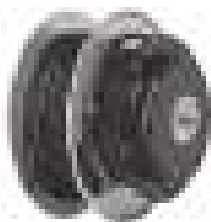
### 4G2,5<sup>2</sup>



| Model     | Length | Cable type | IP                | Bracket | Code                  |
|-----------|--------|------------|-------------------|---------|-----------------------|
| P515      | 9 m    | H05VV-F    | 42                | Swivel  | ER04025-09V-P515      |
| P811      | 15 m   | H07RN-F    |                   |         | ER04025-15R-P811      |
| P812      | 20 m   | H05VV-F    |                   |         | ER04025-20V-P812      |
| S8V04-F   | 31 m   | H07RN-F    | 65                | Fixed   | ER04025-31R-S8V04-F   |
| S8V04-FSR |        |            |                   |         | ER04025-31R-S8V04-FSR |
| S8V04-P   |        |            |                   | Swivel  | ER04025-31R-S8V04-P   |
| S8V04-PSR |        |            |                   |         | ER04025-31R-S8V04-PSR |
| S8H07     | 41 m   | Option     | ER04025-41R-S8H07 |         |                       |
| S8H09     | 55 m   |            | ER04025-55R-S8H09 |         |                       |



### 5G2,5<sup>2</sup>



| Model     | Length | Cable type | IP                | Bracket | Code                  |
|-----------|--------|------------|-------------------|---------|-----------------------|
| P520      | 7 m    | IGUS CF77  | 42                | Swivel  | ER05025-07P-P520      |
| P815      | 12 m   | H07RN-F    |                   |         | ER05025-12R-P815      |
| P816      | 17 m   | H05VV-F    |                   |         | ER05025-17V-P816      |
| S8V28-F   | 22 m   | H07RN-F    | 65                | Fixed   | ER05025-22R-S8V28-F   |
| S8V28-FSR |        |            |                   |         | ER05025-22R-S8V28-FSR |
| S8V28-P   |        |            |                   | Swivel  | ER05025-22R-S8V28-P   |
| S8V28-PSR |        |            |                   |         | ER05025-22R-S8V28-PSR |
| S8H33-F   | 31 m   | H07RN-F    | 65                | Fixed   | ER05025-31R-S8H33-F   |
| S8H33-FSR |        |            |                   |         | ER05025-31R-S8H33-FSR |
| S8H33-P   |        |            |                   | Swivel  | ER05025-31R-S8H33-P   |
| S8H33-PSR |        |            |                   |         | ER05025-31R-S8H33-PSR |
| S8H35     | 55 m   | Option     | ER05025-55R-S8H35 |         |                       |



### Grounding



| Model     | Section (mm²) | Length           | Delivered          | IP                 | Bracket | Code                  |
|-----------|---------------|------------------|--------------------|--------------------|---------|-----------------------|
| P106      | 1x6           | 7 m              | with clip          | 42                 | Swivel  | ER01060-07V-P106      |
| P306      |               | 16 m             |                    |                    |         | ER01060-16V-P306      |
| P502      |               | 11 m             |                    |                    |         | ER01160-11V-P502      |
| P801      | 22 m          | ER01160-22V-P801 |                    |                    |         |                       |
| S502-F    | 20 m          | Fixed            |                    |                    |         | ER01250-20V-S502-F    |
| S502-P    |               |                  |                    |                    |         | Swivel                |
| S8H02-F   | 1x25          | 32 m             |                    | 65                 | Fixed   | ER01250-32V-S8H02-F   |
| S8H02-FSR |               |                  |                    |                    |         | ER01250-32V-S8H02-FSR |
| S8H02-P   |               |                  |                    |                    | Swivel  | ER01250-32V-S8H02-P   |
| S8H02-PSR |               |                  |                    |                    |         | ER01250-32V-S8H02-PSR |
| S541-F    | 1x35          | 15 m             | Fixed              | ER01350-15P-S541-F |         |                       |
| S541-P    |               | Swivel           | ER01350-15P-S541-P |                    |         |                       |
| S8V58     |               | 25 m             | Option             | ER01350-25P-S8V58  |         |                       |
| S8H59     |               | 40 m             | ER01350-40P-S8H59  |                    |         |                       |



Clips 40A to 400A  
Codes ERP...



# AUTOMATIC CABLE REELS

## DATA - ATEX - High power - Multi-strand

**DATA**    **P555**    **ATEX**    **A7/65**    **4G4<sup>2</sup>**    **S8V06**    **5G6<sup>2</sup>**    **S8V32**



**8 meters**  
4x2x0,15mm<sup>2</sup> - CAT6  
Plastic housing  
Swivel flange  
Removable ratchet  
Horizontal and vertical use  
**Code ERT08015-12-P555**



**26 meters - ATEX**  
1x6mm<sup>2</sup> - H05VV-F  
ALUMINUM housing  
Swivel flange  
Optional ratchet  
Horizontal and vertical use  
**Code ERATX0106-26V-A7/65**



ALU housing



**22 meters**  
4G4mm<sup>2</sup> - H07RN-F  
Open steel housing  
Removable ratchet  
Horizontal and vertical use  
*Model available with fixed flange or swivel flange and with Safety Return*  
**Codes ER04040-22R-S8V06...**



**17 meters**  
5G6mm<sup>2</sup> - H07RN-F  
Open steel housing  
Removable ratchet  
Horizontal and vertical use  
*Model available with fixed flange or swivel flange and with Safety Return*  
**Codes ER05060-17R-S8V32...**

**5G6<sup>2</sup>**    **S8V36 - S8V38**    **5G16<sup>2</sup>**    **S8V40**    **Multibrins**    **S8V46**    **Multibrins**    **S8V56**



**26 meters**  
5G6mm<sup>2</sup> - H07RN-F  
Open steel housing  
Removable ratchet  
Horizontal and vertical use  
*Model available with fixed flange or swivel flange and with Safety Return*  
**Codes ER05060-26R-S8V3...**



**15 meters**  
5G16mm<sup>2</sup> - PUR  
Open steel housing  
Removable ratchet  
Horizontal and vertical use  
*Options: see doc STEEL 800*  
**Code ER05160-15P-S8V40**



**17 meters**  
12x1,5mm<sup>2</sup> - PUR  
Open steel housing  
Removable ratchet  
Horizontal and vertical use  
*Options: see doc STEEL 800*  
**Code ER12015-17P-S8V46**



**16 meters**  
25x1,5mm<sup>2</sup> - PUR  
Open steel housing  
Removable ratchet  
Horizontal and vertical use  
*Options: see doc STEEL 800*  
**Code ER25015-16P-S8V56**

Beyond these 76 essential models, we have ALL the automatic reels for INDUSTRY and CONSTRUCTION (+500 models).

Consult us.



The cable unwinds and winds up automatically!  
We no longer get our hands dirty.  
Charging your car becomes quick and easy.

2 types of reels :  
- with integrated charging station  
- to be installed after the charging station.

| Model                  | Max Power | Length    | Power supply     | Type 2 socket    | Code        |
|------------------------|-----------|-----------|------------------|------------------|-------------|
| GREEN REEL 3.7 station | 3,7 kW    | 4 meters  | Single-phase 16A | Output           | ERVWB-T2    |
| GREEN REEL 7.4         | 7,4 kW    | 10 meters | Single-phase 32A | Input and output | ERV07-S5-T2 |
| GREEN REEL 22          | 22 kW     |           | Three-phase 32A  |                  | ERV22-S5-T2 |



### 2 types of automatic cable reels

|   |
|---|
| <b>You don't have a charging station</b>                        |
| Single-phase  |
| <b>GREEN REEL 3.7 with integrated charging station (3,7 kW)</b> |



|                                    |                      |
|------------------------------------|----------------------|
| <b>You have a charging station</b> |                      |
| Single-phase                       | Three-phase          |
| maxi 7,4 kW                        | maxi 22 kW           |
| <b>GREEN REEL 7.4</b>              | <b>GREEN REEL 22</b> |



# AUTOMATIC CABLE REELS

## Pneumatic reels

### Industrial quality

For compressed air, water and all types of fluids. For all uses.

New



YP100



YP300



YP900



YP900 Light Inox - Full Inox



YS600

## Signal strip

Ribbon 8 meters



White / Red : code **ERSR/08P1BR**  
Yellow / Black : code **ERSR/08P1JN**

Ribbon 20 meters



White / Red : code **ERSR/20P5BR**  
Yellow / Black : code **ERSR/20P5JN**

Chain 20 meters



Fixed flange : code **ERSC/20S5BR-F**  
Swivel flange : code **ERSC/20S5BR-P**

## MAGIC REEL



New

Codes **ERU03025/1...**

## Reel + hand lamp



Codes **ERL...**

## Battery chargers



Codes **ERB...**

## Balancers



Codes **EQ...**

## Hand lamps



Codes **BA... BF... BL...**



# CABLE PROTECTION

## Pedestrian Crossing

### Flexible (in rolls)

### BASEA

Snapped at the base.

Delivered with a double-sided adhesive strip.



| Model    | Material Color   | Capacity                               | Width  | Height | Weight per meter | 1,50 meter roll | 3 meters roll | 9 meters roll |
|----------|------------------|--|--------|--------|------------------|-----------------|---------------|---------------|
| BASEA 6  | Grey PVC         | 1 cable Ø 6 mm<br>ou 2 cables Ø 4 mm   | 52 mm  | 9 mm   | 0,28 kg          | PCP06G150       | PCP06G300     | PCP06G900     |
| BASEA 10 |                  | 1 cable Ø 10 mm<br>ou 2 cables Ø 7 mm  | 71 mm  | 12 mm  | 0,54 kg          | PCP10G150       | PCP10G300     | PCP10G900     |
| BASEA 13 |                  | 1 cable Ø 13 mm<br>ou 2 cables Ø 9 mm  | 86 mm  | 18 mm  | 0,82 kg          | PCP13G150       | PCP13G300     | PCP13G900     |
| BASEA 16 |                  | 1 cable Ø 16 mm<br>ou 2 cables Ø 13 mm | 108 mm | 28 mm  | 1,01 kg          | PCP16G150       | PCP16G300     | PCP16G900     |
| BASEA 25 | Grey Elastomer*  | 1 cable Ø 25 mm<br>ou 2 cables Ø 20 mm | 160 mm | 30 mm  | 1,49 kg          | PCP25G150       | PCP25G300     | PCP25G900     |
| BASEA 08 | Black Elastomer* | 1 cable Ø 8 mm<br>ou 3 cables Ø 6 mm   | 65 mm  | 10 mm  | 0,49 kg          | PCP08N150       | PCP08N300     | PCP08N900     |
| BASEA 14 |                  | 1 cable Ø 14 mm<br>ou 2 cables Ø 10 mm | 80 mm  | 16 mm  | 0,77 kg          | PCP14N150       | PCP14N300     | PCP14N900     |
| BASEA 18 |                  | 1 cable Ø 18 mm<br>ou 3 cables Ø 13 mm | 80 mm  | 20 mm  | 1,11 kg          | PCP18N150       | PCP18N300     | PCP18N900     |

\* Elastomer models are recommended for an outdoor use.



### Pedestrian bridge

#### Economic - High capacity

Ground resting.  
Easy to install (dovetails).  
3 models :



|                        | Max capacity   | Chanel size | Length  | Width  | Height | Weight  | Color  | Code      |
|------------------------|--|-------------|---------|--------|--------|---------|--------|-----------|
| PEDESTRIAN BRIDGE 13-1 | 3 cables Ø 13 mm   | 13x40 mm    | 1 meter | 132 mm | 20 mm  | 1,5 kg  | Black  | PP13A100N |
|                        |  |             |         |        |        |         | Yellow | PP13A100J |
| PEDESTRIAN BRIDGE 26-1 | 3 cables Ø 26 mm   | 26x85 mm    | 1 meter | 210 mm | 36 mm  | 4 kg    | Black  | PP26A100N |
| PEDESTRIAN BRIDGE 30-7 | 3 cables Ø 30 mm<br>+ 2 cables Ø 27 mm<br>+ 2 cables Ø 22 mm | 80 cm       | 425 mm  | 35 mm  | 3,5 kg | PP30G80 |        |           |

### Floor troughs

#### Grey or Brown

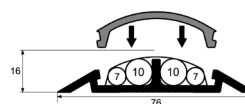
Rigid bars.  
Base + Cover.  
Double sided adhesive provided.  
PG12 : angle and accessories.

| Model | Max capacity                              | Length   | Weight  | Color | Code      |
|-------|---|----------|---------|-------|-----------|
| PG06  | 1 cable Ø 6 mm<br>or<br>2 cables Ø 5 mm   | 2 meters | 0.25 kg | Grey  | PG06A200G |
|       |   |          |         | Brown | PG06A200M |
| PG12  | 2 cables Ø 12 mm<br>or<br>2 cables Ø 6 mm | 1 meter  | 0.48 kg | Grey  | PG12B100G |
|       |   | 2 meters | 0.96 kg |       | PG12B200G |
|       |   | 2 meters | 0.96 kg | Brown | PG12B200M |

### TOP 10

#### Floor trough roll (flexible PVC)

Double-sided adhesive strip.  
Grey.

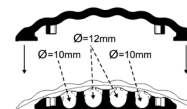


| Max capacity                             | Number of channels | Width | Height | Rolls size  | Weight  | Code      |
|--|--------------------|-------|--------|-------------|---------|-----------|
| 2 cables Ø 10 mm<br>+<br>2 cables Ø 7 mm | 2                  | 76 mm | 16 mm  | 1,50 meters | 0,92 kg | PCT10B150 |
|  |                    |       |        | 3 meters    | 1,84 kg | PCT10B300 |
|  |                    |       |        | 9 meters    | 5,52 kg | PCT10B900 |

### ONDEO

#### Elegant design

Detachable cover.  
Angle and end point.  
Polyurethane, 3 colors.

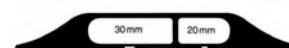


| Max capacity                              | Length | Width  | Height | Weight  | Color  | Code     |
|---|--------|--------|--------|---------|--------|----------|
| 2 cables Ø 12 mm<br>+<br>2 cables Ø 10 mm | 87 cm  | 120 mm | 21 mm  | 1,20 kg | Grey   | PN12D87G |
|   |        |        |        |         | Yellow | PN12D87J |
|   |        |        |        |         | Black  | PN12D87N |

### DOUBLE

#### 2 compartments

Grey elastomer.  
Delivered with a double-sided adhesive strip.



| Max capacity     | Number of channels | Width  | Height | Rolls size  | Weight  | Code      |
|------------------|--------------------|--------|--------|-------------|---------|-----------|
| 5 cables Ø 10 mm | 2                  | 107 mm | 17 mm  | 1,50 meters | 2,16 kg | PCD10B150 |
|                  |                    |        |        | 3 meters    | 4,32 kg | PCD10B300 |

### Industrial packaging

### Cable sheath

### Office packaging



| Diameter | Color  | Rolls delivered with 1 tool |           | Office packaging 2 meters + tool | Additional tool |
|----------|--------|-----------------------------|-----------|----------------------------------|-----------------|
| 8 mm     | Black  | 100 meters                  | MC08N100M | -                                | MC08            |
| 15 mm    |        | 50 meters                   | MC15N50M  | -                                | MC15            |
| 20 mm    | Silver | 30 meters                   | MC20N30M  | MC20N150                         | MC20            |
|          |        |                             | MC20A30M  | MC20A150                         |                 |
| 25 mm    | Black  | 20 meters                   | MC25N20M  | -                                | MC25            |
| 32 mm    |        | 15 meters                   | MC32N15M  | -                                | MC32            |

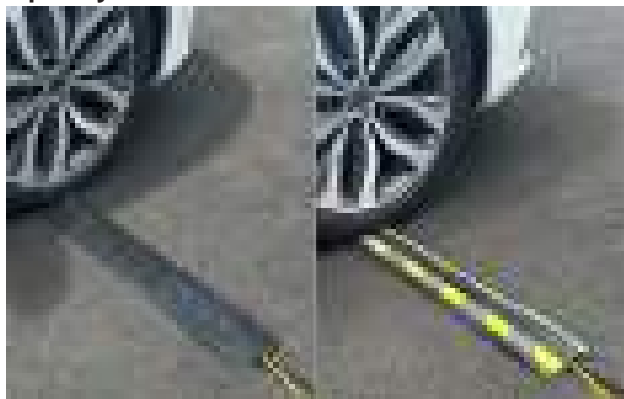




## Vehicule Crossing

### VOLGA DUO

Flexible models (in rolls)  
Temporary or less intensive uses



In black elastomer with yellow/black non-slip adhesive to stick or not according to your needs.  
Snapped at the base, easy to insert cables without disconnecting them.  
Light weight, easy to install and to store.

| Model      | Cable max. Ø | Schema | Lenght | Code      |
|------------|--------------|--------|--------|-----------|
| VOLGA 15   | 15 mm        |        | 2,50 m | PCV15A250 |
|            |              |        | 5 m    | PCV15A500 |
| VOLGA 1x23 | 23 mm        |        | 2,50 m | PCV23A250 |
|            |              |        | 5 m    | PCV23A500 |
| VOLGA 2x23 | 23 mm        |        | 2,50 m | PCV23B250 |
|            |              |        | 5 m    | PCV23B500 |
| VOLGA 3x23 | 23 mm        |        | 2,50 m | PCV23C250 |
|            |              |        | 5 m    | PCV23C500 |
| VOLGA 25   | 25 mm        |        | 2,50 m | PCV25A250 |
|            |              |        | 5 m    | PCV25A500 |
| VOLGA 35   | 35 mm        |        | 1,25 m | PCV35A125 |
|            |              |        | 2,50 m | PCV35A250 |

### VOLGA YELLOW STRIPES

Flexible models (in rolls)  
Temporary or less intensive uses



Snapped at the base, easy to insert cables without disconnecting them.  
Black elastomer and yellow stripes.  
Light weight, easy to install and to store.

| Model        | Cable max. Ø | Schema | Lenght | Code       |
|--------------|--------------|--------|--------|------------|
| VOLGA 1x23 J | 23 mm        |        | 2,50 m | PCV23A250J |
|              |              |        | 5 m    | PCV23A500J |
| VOLGA 2x23 J | 23 mm        |        | 2,50 m | PCV23B250J |
|              |              |        | 5 m    | PCV23B500J |
| VOLGA 3x23 J | 23 mm        |        | 2,50 m | PCV23C250J |
|              |              |        | 5 m    | PCV23C500J |
| VOLGA 30 J   | 30 mm        |        | 1 m    | PCV30A100J |

### VOLGA BASIC

Flexible models (in rolls)  
Temporary or less intensive uses  
Open on the top



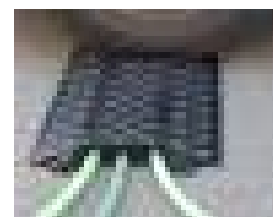
VOLGA BASIC 20 and 40 : black.  
VOLGA BASIC 60 : with yellow stripes and 2 rigid metal rods

| Model          | Cable max. Ø | Schema | Lenght | Code       |
|----------------|--------------|--------|--------|------------|
| VOLGA BASIC 20 | 20 mm        |        | 4,50 m | PCB20A450  |
|                |              |        | 9 m    | PCB20A900  |
| VOLGA BASIC 40 | 40 mm        |        | 4 m    | PCB40A400  |
| VOLGA BASIC 60 | 60 mm        |        | 1 m    | PCB60A100J |

### VEHICLE BRIDGES 10T

Vehicles up to 10 tons

Cables are laying down on the ground.  
Black.  
Ribbed surface.  
Nestable elements (dovetails).



| Model   | Cable max. Ø | Schema | Lenght | Code     |
|---------|--------------|--------|--------|----------|
| PV 2x37 | 37 mm        |        | 98 cm  | PV037B98 |
| PV 3x35 | 35 mm        |        | 98 cm  | PV035C98 |

### VEHICLE BRIDGES 50T

Vehicles up to 50 tons

Cables are laying down on the ground.  
Withstands the passage of heavy trucks.  
Ribbed surface.  
Nestable elements (H of connection).



| Model    | Cable max. Ø | Schema | Lenght | Code      |
|----------|--------------|--------|--------|-----------|
| PV 2x85  | 85 mm        |        | 50 cm  | PV085B050 |
| PV 1x120 | 120 mm       |        | 50 cm  | PV120A050 |



## Vehicle Crossing

### COBRA

Economic range.  
All uses, even intensive.



Black base elastomer, yellow hinged cover. Rigid elements, dovetail insert to maintain elements together 45° angles and finishes available for specific models. Fixation holes on specific models.

| Model      | Cable max. Ø | Charge maxi per tire tested LNE* (with cable) | Schema | Length | Code      |
|------------|--------------|---|--------|--------|-----------|
| COBRA 26-2 | 26 mm        | 4,9 tons                                      |        | 1 m    | PAC26B100 |
| COBRA 32-2 | 32 mm        | 4,9 tons                                      |        | 1 m    | PAC32B100 |
| COBRA 31-3 | 31 mm        | 4,9 tons                                      |        | 90 cm  | PAC31C90  |
| COBRA 31-4 | 31 mm        | 4,9 tons                                      |        | 90 cm  | PAC31D90  |
| COBRA 38-5 | 38 mm        | 4,5 tons                                      |        | 89 cm  | PAC38E89  |
| COBRA 50-3 | 50 mm        | 5,4 tons                                      |        | 89 cm  | PAC50C89  |
| COBRA 67-3 | 67 mm        | 5,4 tons                                      |        | 89 cm  | PAC67C89  |
| COBRA 82-2 | 82 mm        | 5,9 tons                                      |        | 90 cm  | PAC82B90  |

Laboratoire National d'Essais (rapport d'essai n° P145630)

### BOA

Premium range.  
All uses, even intensive.  
Lockable tap.



Also for RENT

Black base, yellow hinged cover.  
BOA 17-6 available with black base, yellow hinged cover. Polyurethane. Rigid elements, dovetail insert to maintain elements together 45° Angles and finishes available for specific models. Fixation holes on specific models.

Can be customized with a logo.

| Model     | Cable max. Ø | Max weight per 20x20cm | Schema | Length | Code                   |
|-----------|--------------|------------------------|--------|--------|------------------------|
| BOA 17-6  | 17 mm        | 2 tons                 |        | 1 m    | PA17F100J<br>PA17F100N |
| BOA 35-3  | 35 mm        | 2 tons                 |        | 1 m    | PA35C100               |
| BOA 35-5  | 35 mm        | 5 tons                 |        | 87 cm  | PA35E87                |
| BOA 45-4  | 45 mm        | 3,5 tons               |        | 70 cm  | PA45D70                |
| BOA 49-3  | 49 mm        | 5 tons                 |        | 1 m    | PA49C100               |
| BOA 62-5  | 62 mm        | 5 tons                 |        | 70 cm  | PA62E70                |
| BOA 117-2 | 117 mm       | 5 tons                 |        | 70 cm  | PA117B70               |

### Crossing Ramps



| Model     | Cable max. Ø | Length | Code      |
|-----------|--------------|--------|-----------|
| RAMPE 70  | 70 mm        | 30 cm  | PAR070B30 |
| RAMPE 121 | 121 mm       | 29 cm  | PAR121B29 |

### CAPA



Rigid cover fixed by 2 selfadhesive strips.  
6 models.

### Gutters



To bury (passage of pedestrians and light vehicles).  
With cover.  
3 models.

Codes CAN ...

### The BOX



Storage container for storing and transporting cable protections.

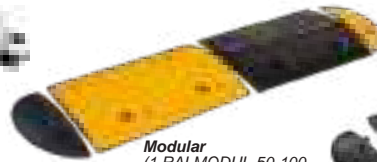
Code PACBOX

### Speed bumps for cables



| Cable max. Ø        | Dimensions            | Color  | Code       |
|---------------------|-----------------------|--------|------------|
| 38 mm               | L80 cm x l60cm x H8cm | Black  | PARALNOIR  |
|                     |                       | Yellow | PARALJAUNE |
| Concrete anchors x4 |                       |        | PAFIX4     |

### Speed bumps

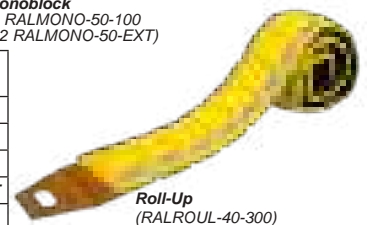


Modular  
(1 RALMODUL-50-100  
+ 1 RALMODUL-50-EXT)



Monoblock  
(1 RALMONO-50-100  
+ 2 RALMONO-50-EXT)

| Model     | Element    | Sales unit   | Dimensions     | Code            |
|-----------|------------|--------------|----------------|-----------------|
| Monoblock | Speed bump | Unit         | 1830x300x45 mm | RALMONO-50-183  |
|           | End cap    |              | 190x300x45 mm  | RALMONO-50-EXT  |
| Modular   | Speed bump | Pair (1Y+1B) | 1000x350x50 mm | RALMODUL-50-100 |
|           | End caps   |              | 170x350x50 mm  | RALMODUL-50-EXT |
| Roll-Up   | Speed bump | Unit         | 3000x220x40 mm | RALROUL-40-300  |



Roll-Up  
(RALROUL-40-300)

Nouveau





**Headquarters and factory**

21 rue Sadi Carnot  
94880 Noiseau (France)  
e-mail : [contact@cable-equipements.fr](mailto:contact@cable-equipements.fr)

**Commercial office**

Worringer Straße 30  
D-50668 Köln (Deutschland)  
e-mail : [kontakt@cable-equipements.com](mailto:kontakt@cable-equipements.com)

**Tel. : (+33) 01 45 90 14 14**  
**[www.cable-equipements.com](http://www.cable-equipements.com)**

Cachet distributeur

